

VERGES ALIVE



“As yards get smaller, we need to look around us and utilise all available space in our suburbs to mitigate the urban heat island effect and help create urban habitat, a lack of which is one of the biggest threats to urban wildlife. Verges or nature strips present an opportunity to add more greenery and become biodiversity hotspots.”

- Sophie Thomson



Verge gardens are a wonderful way to restore some beauty to your verge and are also great to help bring the community together.

Look around our City and you will see a number of verge garden hot spots, growing with the love of our community. To help get you started, we have developed a number of handy resources which include our Community Verge Development Guidelines and Checklist as well as this design guide. No matter what type of garden you are planning, a native or vegetable garden, we have suggested layouts and plants and have worked with local residents so you can see examples of these verge gardens in action.

Want more?

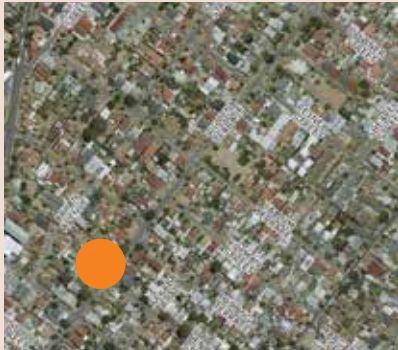
Jump to our website and search 'verges' to find a bank of our resources. Make sure you read the Guidelines and can tick all the boxes in the checklist, before you go ahead and plant up your verge.

*If you've got a question, contact our Open Space Community Planner
jwilloughby@charlessturt.sa.gov.au
0417 971 923*



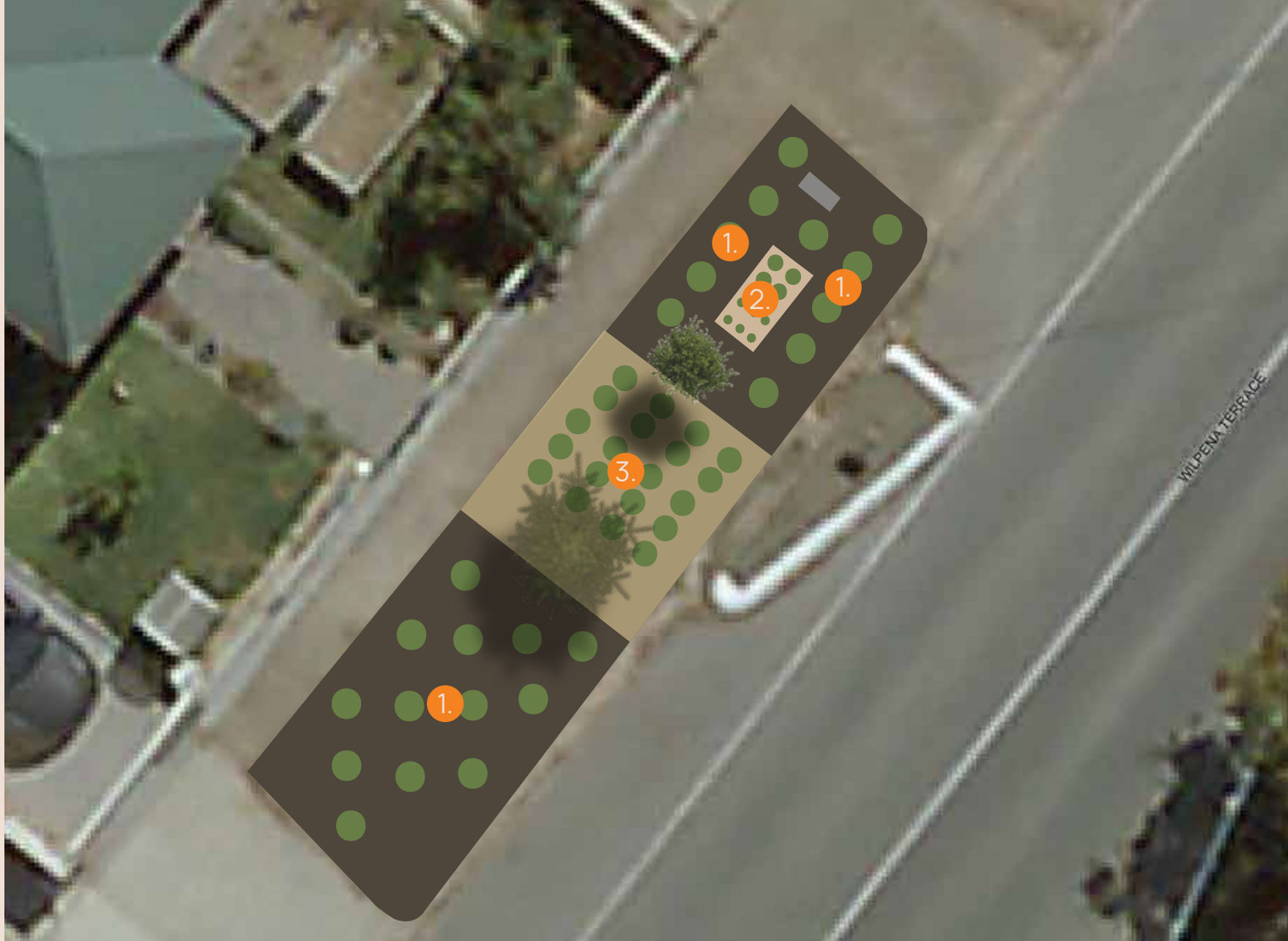


1. **Ground Cover** such as *Scaevola aemula* **Mauve Clusters**
2. **Raised planter box** with edible vegetables such as **Rocket, Basil and Parsley**
3. Other seasonal vegetables planted in the ground with pea straw mulch such as **Spring Onion, Potato and Tomato**



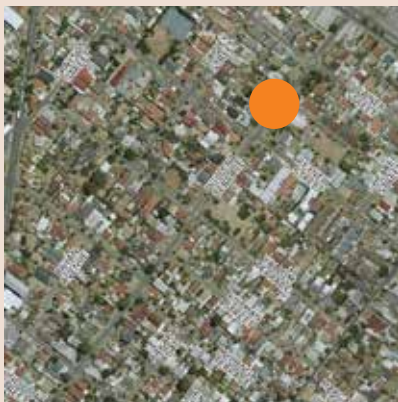
site plan

not to scale
03.2021



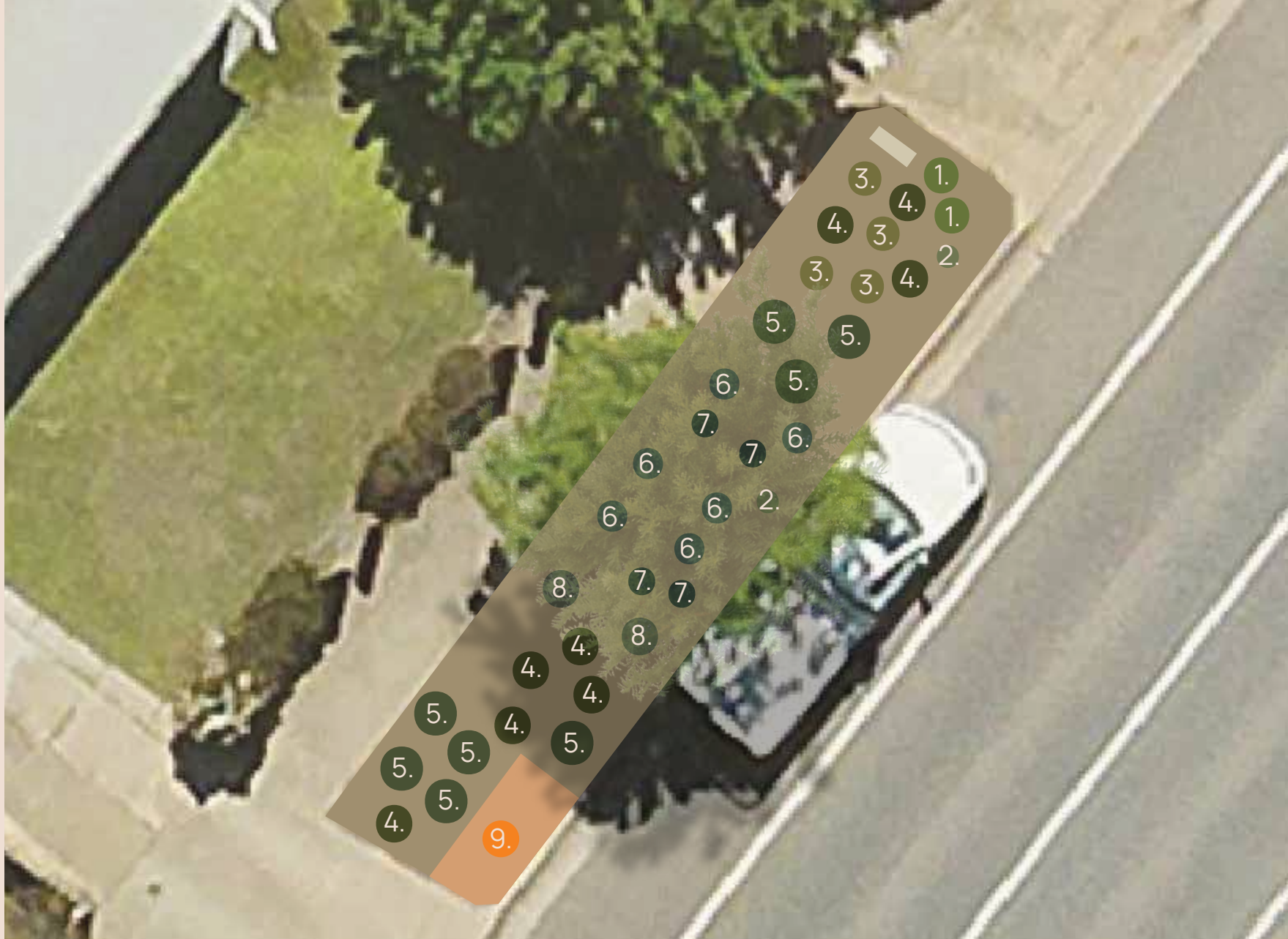
WILPENA TERRACE, KILKENNY
'VEGIE VERGE'
VERGES ALIVE

1. Scaevola aemula
Mauve Clusters
2. Dianella revolute
Blue Flax Lily
3. Banksia blechnifolia
Southern Blechnum Banksia
4. Banksia spinulosa
Coastal Cushion
5. Anigozanthus
'Blitz' Kangaroo Paw
6. Liriope muscari
Lily Turf
7. Tulbaghia violacea
Society Garlic
8. Lotus berthelotii
Lotus Vine Flower
9. Bin Stand



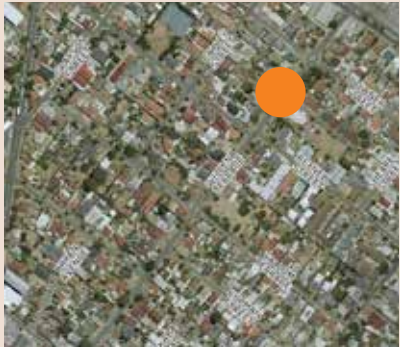
site plan

not to scale
03.2021



WILPENA TERRACE, KILKENNY
A MIX OF AUSTRALIAN NATIVES AND EXOTIC PLANTS
VERGES ALIVE

1. *Tulbaghia violacea*
Society Garlic
2. *Grevillea*
Winter Delight
3. *Scaevola aemula*
Mauve Clusters
4. *Convolvulus erubescens*
Bindweed
5. *Dampiera Linearis*
Early Bird
6. *Dianthus plumarius*
Cottage Pink
7. *Westringia fruticosa* 'Milky Way'
Native Rosemary
8. Existing tree
9. Bin Stand
10. Path



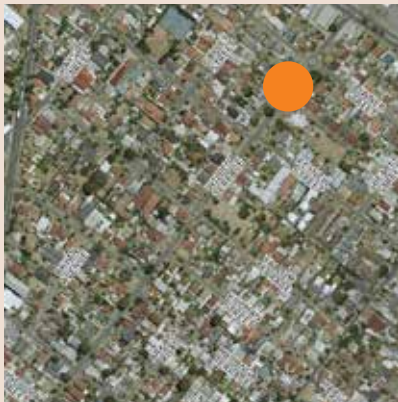
site plan

not to scale
03.2021



WILPENA TERRACE, KILKENNY
A MIX OF AUSTRALIAN NATIVES AND EXOTIC PLANTS
VERGES ALIVE

1. Stachys byzantine
Lambs Ears
2. Anigozanthus
'Blitz' Kangaroo Paw
3. Clivia miniate
Orange Clivia
4. Raphiolepis indica
Indian Hawthorn
5. Mix of Thymus serpyllum
Creeping Thyme and Liriope
muscaria **Lily Turf**
surrounding the existing tree
6. Open area to place bins



site plan

not to scale
03.2021



WILPENA TERRACE, KILKENNY
'FORMAL WITH FLOWERS'
VERGES ALIVE

1. Lomandra Lime Tuff
2. Lomandra longifolia
Great White
3. Craspedia glauca
Billy Buttons
4. Tulbaghia violacea
Society Garlic
5. Convolvulus erubescens
Bindweed
6. Dampiera Linearis
Early Bird
7. Dianthus plumarius
Cottage Pink
8. Banksia blechnifolia
Southern Blechnum Banksia
9. Calostemma purpureum
Pink Garland Lily
10. Existing tree
11. Bin Stand



site plan

not to scale
03.2021



WILPENA TERRACE, KILKENNY
MIXED FLOWERING
VERGES ALIVE

1. *Lomandra longifolia*
Great White groups of 3 & 6
2. *Scaevola aemula* **Mauve Clusters** groups of 3
3. *Lomandra Lime Tuff*
groups of 4
4. *Myoporum parvifolium*
Boobialla groups of 2
5. *Dianella revolute*
Blue Flax Lily infill
6. *Craspedia glauca*
Billy Buttons
7. Bin Stand



site plan

not to scale
03.2021



WILPENA TERRACE, KILKENNY
AUSTRALIAN NATIVES STRAPPY'S AND GROUND COVERS
VERGES ALIVE



Planter Boxes will not be appropriate for use in all locations/streets, they must be purchased from Council (at a subsidised price) and the location approved by Council prior to purchase.

All verges planted as part of the Verges Alive programme will be placed on our Do Not Mow and Do Not Spray lists to ensure they are not damaged during contracted works.

