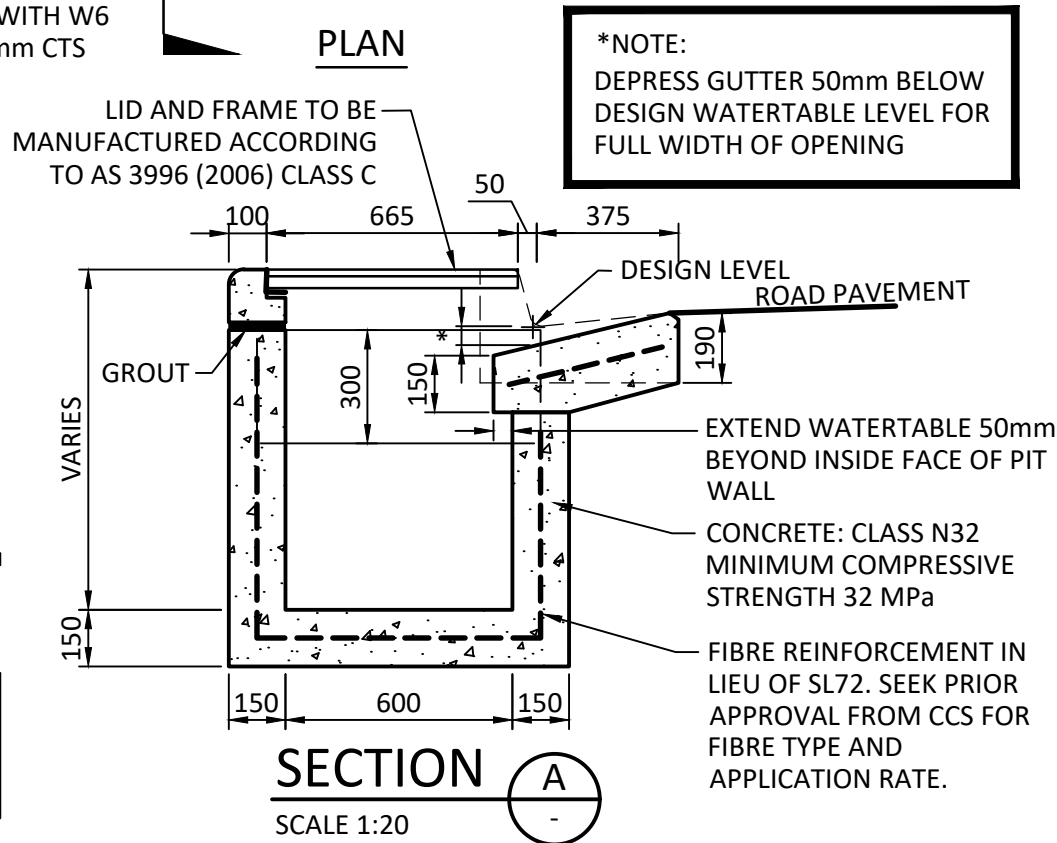
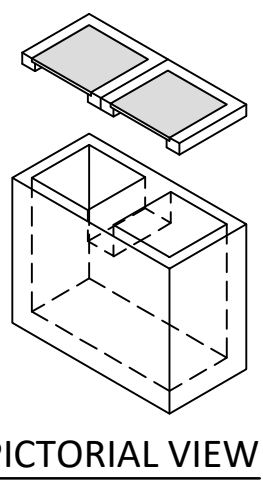
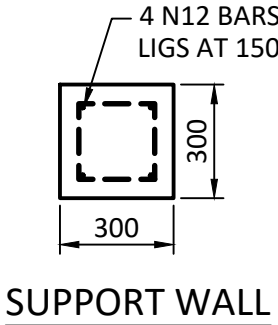
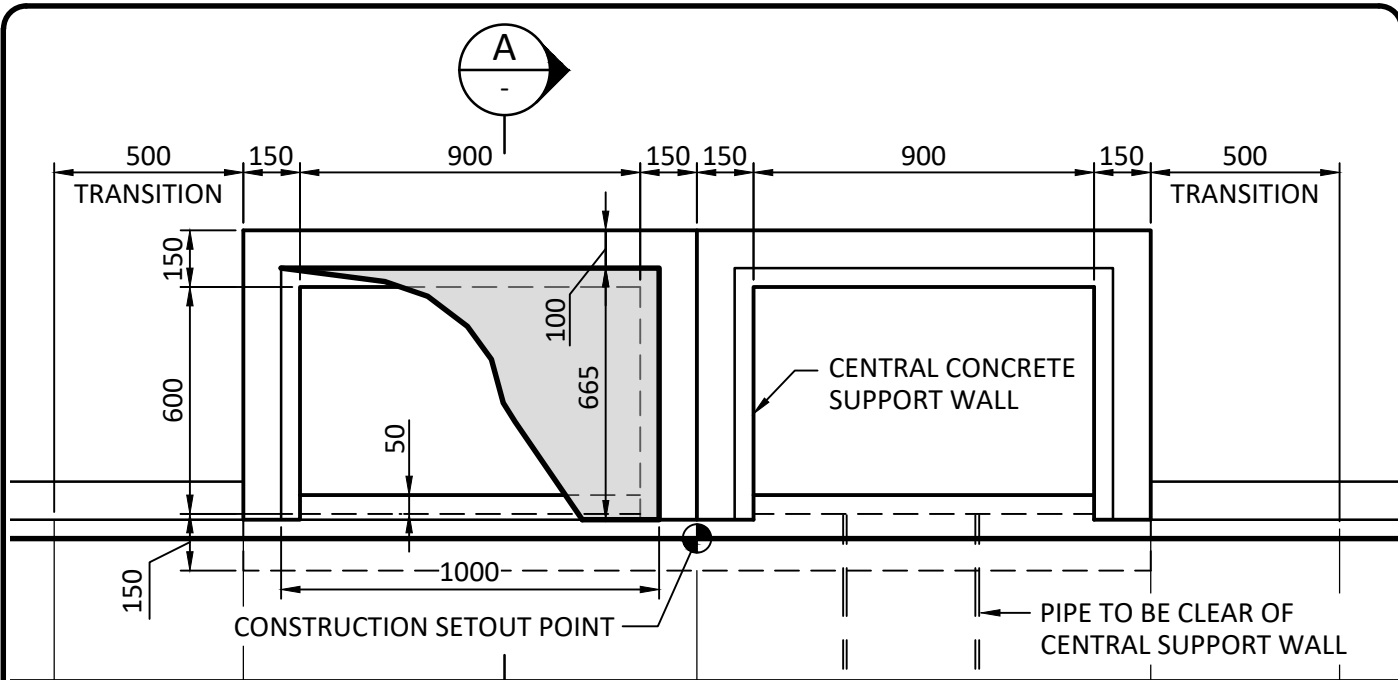


DRAWING FILE: T:\AUTOCAD BLOCKS\2010+SEPT DOUBLE UPRIGHT K&G (M1186).dwg 28/08/2023 6:26:35 PM



DOUBLE SIDE ENTRY PIT (UPRIGHT KERB AND GUTTER)

NOTE:
LID AND FRAME TO BE STANDARD MANUFACTURE OF TERRA FIRMA C-150 - TFC 5400 1000 x 640 WITH 25mm LINTEL REINFORCEMENT OR SIMILAR APPROVED. REINFORCEMENTS TO BE SL72 FABRIC UNLESS APPROVED OTHERWISE.

COORDINATOR DESIGN
B. MORIAS
29.11.21

EDITED
J. FAIRLIE
28.08.23
DRAWN
MY.W
13.02.12
DESIGNED
MY.W
13.02.12

STANDARD DETAIL

DOUBLE SIDE ENTRY PIT

SCALE AS SHOWN

CITY OF CHARLES STURT

SHEET	1	of	1
RECORD No.	12/31024		
DRAWING No.	M1186		