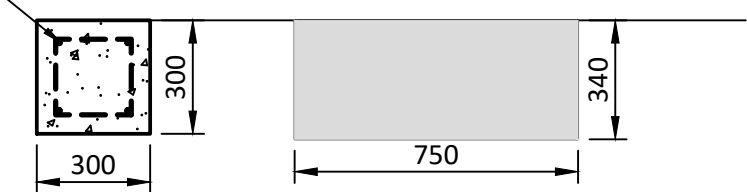
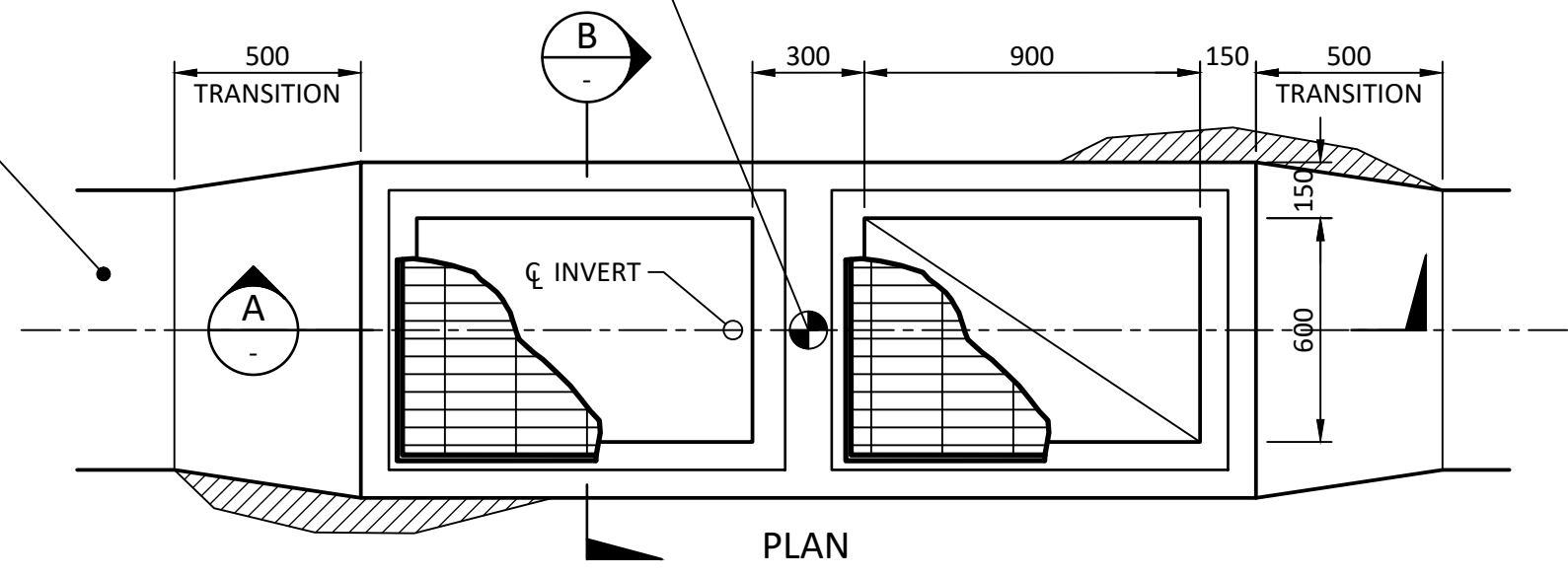


DRAWING FILE: T:\AUTOCAD BLOCKS\2010+DOUBLE VEE GIP-900x600 (M1551).dwg 30/10/2023 2:22:49 PM

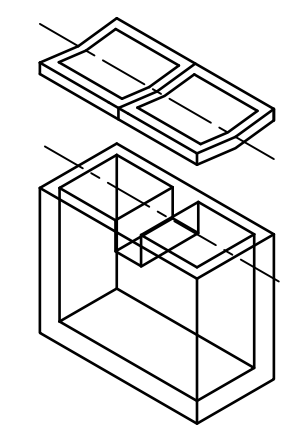
750mm WIDE SPOON DRAIN

CONSTRUCTION SETOUT POINT
(GEOMETRIC CENTRE OF PIT)

4x N12 BARS WITH W6
LIGS @150mm CTRS



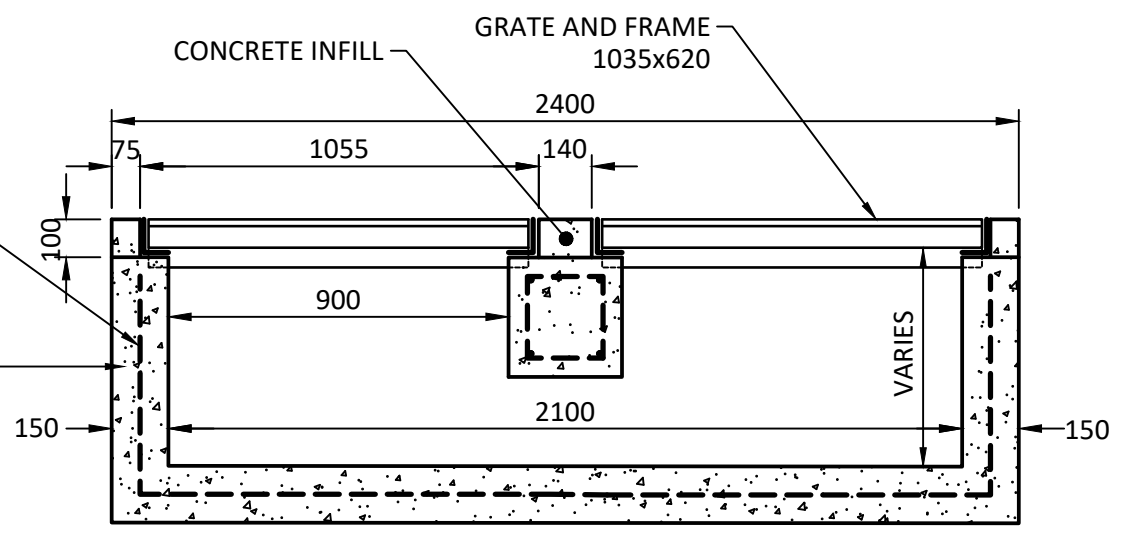
SUPPORT WALL



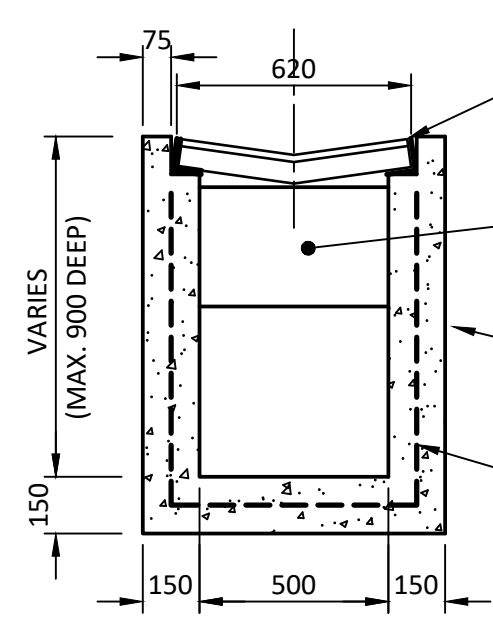
PICTORIAL VIEW

SL72 MESH CENTRAL OR
EQUIVALENT FIBRE
REINFORCED CONCRETE
(PROVIDE FIBRE TYPE AND
APPLICATION RATE FOR
COUNCIL APPROVAL).

CONCRETE: CLASS N32
MINIMUM COMPRESSIVE
STRENGTH 32 MPa



SECTION A
SCALE 1:20



SECTION B
SCALE 1:20

GRATE AND FRAME TO
BE MANUFACTURED
ACCORDING TO AS3996
CLASS D (GATIC OR
SIMILAR APPROVED)

CONCRETE SUPPORT
WALL 300 x 300

CONCRETE: CLASS N32
MINIMUM COMPRESSIVE
STRENGTH 32 MPa

SL72 MESH CENTRAL OR
EQUIVALENT FIBRE
REINFORCED CONCRETE
(PROVIDE FIBRE TYPE AND
APPLICATION RATE FOR
COUNCIL APPROVAL).

NOTES:

1. REFER TO CCS STORMWATER PIT INSTALLATION DETAIL (M1591) FOR MINIMUM EXCAVATION BEDDING AND BACKFILL REQUIREMENTS.
2. FIBRE REINFORCED CONCRETE PITS SHALL BE USED FOR PROJECTS WITHIN 2KM OF COASTLINE.

DOUBLE VEE GRATE (M1551)

COORDINATOR
DESIGN
B. MORIAS
30.10.2023

EDITED
G.FERTEKLIS
30.10.2023

DRAWN
J.FAIRLIE
20.01.2021

DESIGNED
J.FAIRLIE
20.01.2021

STANDARD DETAIL

DOUBLE VEE GRATE

SCALE AS SHOWN

CITY OF CHARLES STURT

SHEET
1 of **1**

RECORD No.
21/17228

DRAWING No.
M1551