

SAFE PARKING AROUND THE AL-KHALIL MOSQUE

The City of Charles Sturt has implemented a comprehensive traffic management and parking scheme across the City to help make it a safe place. Going against the road rules places not only you but others at risk. Tragedies can occur if care is not taken to abide by these rules.

Common Parking Restrictions

Below are some explanations of the parking controls and signs that are placed around the Al-Khalil Mosque.



No Parking Signs

You may use this area for drop off and pick up only, for a maximum of 2 minutes. You must not queue or wait here. The driver must remain with the vehicle.



No Stopping Signs/ Yellow Lines

Both No Stopping Signs and Yellow Lines mean the same thing. There might be one or the other or both. Drivers must not stop on a length of road to

which this restriction applies, even if you are stopping for a short period of time. Stopping here may cause a traffic hazard as well as congestion.



Bus Zone Signs

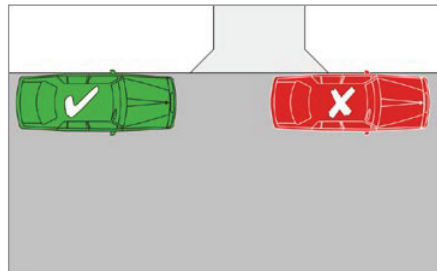
You must not stop within a bus zone at any time. This zone is only available to public buses.

If there are no signs, you are not allowed to stop within

20m of the approach to a bus stop or within 10m of the departure side.

Parking On or Across a Driveway

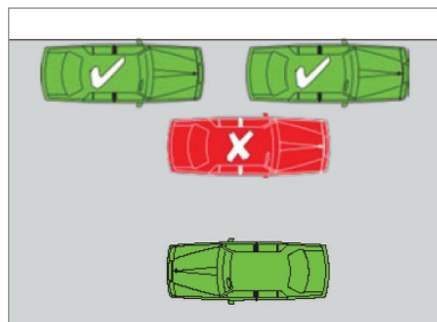
Vehicles parking across driveways can inconvenience nearby residents and result in complaints to Council, particularly when they wish to enter or leave their property and cannot do so because a vehicle is parked across it. Vehicles are not to park in such a manner so as to restrict any part of a driveway. This act can also result in blocking pedestrian access.



Overhanging a driveway

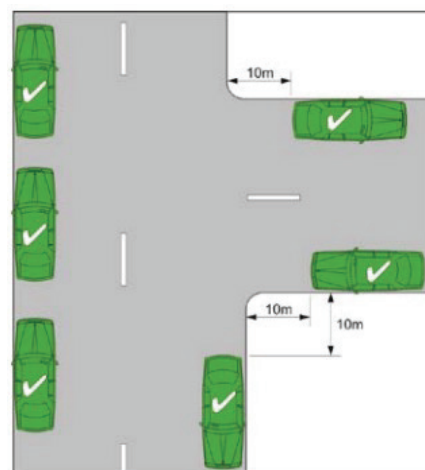
Double Parking

Drivers must not stop next to a vehicle already stopped or parked at the kerb at any time. This practice is illegal and creates dangerous situations for traffic flow and for pedestrians crossing a road.



Stopping near an Intersection

Drivers must not stop within 10 metres of an intersection without traffic lights.



Parking in a Bicycle Lane

Drivers are unable to stop (or park) in a bicycle lane at any time during its operation.

Parking on Yellow Lines

Drivers are unable to stop (or park) on a road marked with a continuous yellow edge line. Stopping here may cause a traffic hazard.



6 Helpful Tips for Safe Parking

Here are 4 helpful tips for safety near the Al-Khalil Mosque.

1. Consider alternative transport modes to reduce the number of vehicles (and improve your health!)
2. Allow enough time to avoid rushing and potentially parking illegally.
3. Always observe parking signs and parking control lines, such as yellow lines. They are designed to keep you and the broader community safe.
4. Park a few streets away and walk to reduce congestion and improve safety. This is also good exercise and helps teach your child road safety rules.

Behaviours To Avoid

- Parking in the bicycle lane on Torrens Road when in operation
- Parking on roads marked with yellow lines
- Parking in areas signed as 'no parking' areas
- Parking across driveways
- Parking on areas not designed for parking, such as verges and pathways.